

42M Truck Mounted Boom Pump with 158m³/h Output & ZZ Type Boom Design

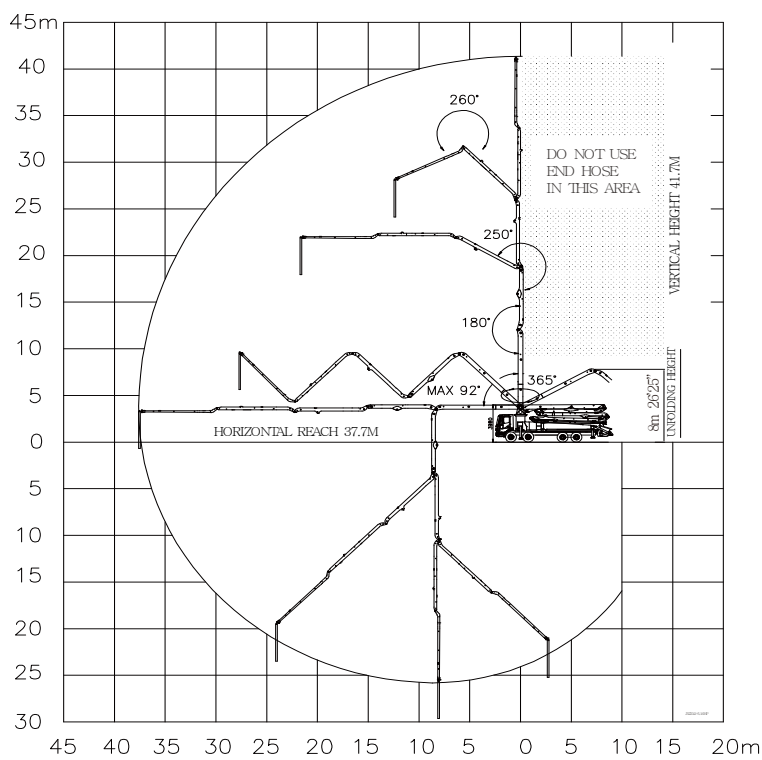
TECHNICAL SPECIFICATION

GENERAL SPECIFICATION	
Delivery Line	DN 125 / 5"
Radio remote	Proportional control
Wear plate / Ring	Tungsten Carbide
Water Pump	20 Bar
Water Tank	500 Liter
Auto Lubrication	Hyd. grease, Hopper

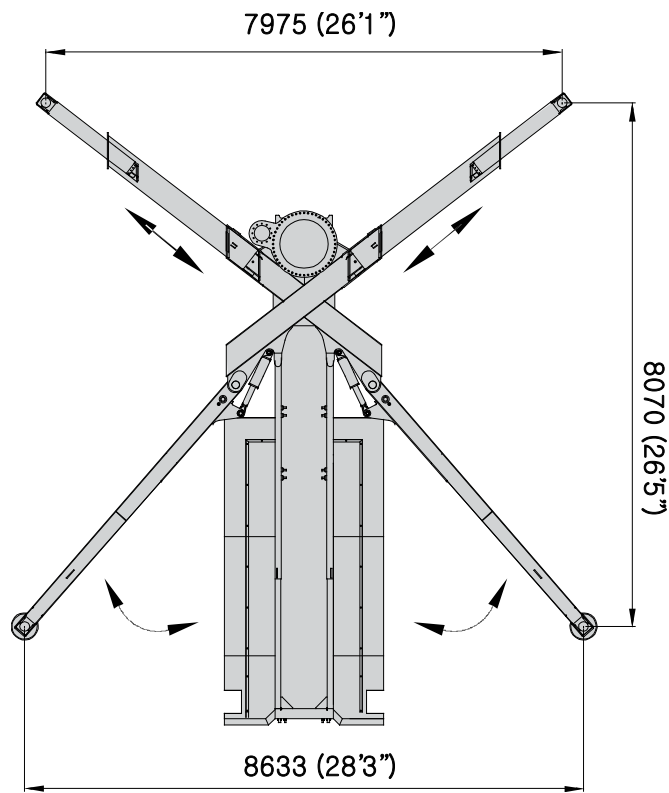
PUMP SPECIFICATION		
Output	Rod	158 m³/h
	Piston	98 m³/h
Pressure	Rod	72 Bar
	Piston	115 Bar
Delivery Cylinder (Hard-chromed)	Φ230 mm	
Stroke Length	2100 mm	
S-Valve	S2018 (8"X7")	
System Pressure	350 Bar	
Switching Type	Hydraulic	
Hopper Capacity	600 Liter	

BOOM SPECIFICATION	
Number of booms	5 Sections
Folding Type	Z & Z Type
Vertical Height	41.7 m
Horizontal Reach	37.7 m
Unfolding height	8.0 m
End-Hose Length	4.0 m
1st Section	8.3 m
2nd Section	6.8 m
3rd Section	7.2 m
4th Section	7.7 m
5th Section	7.7 m

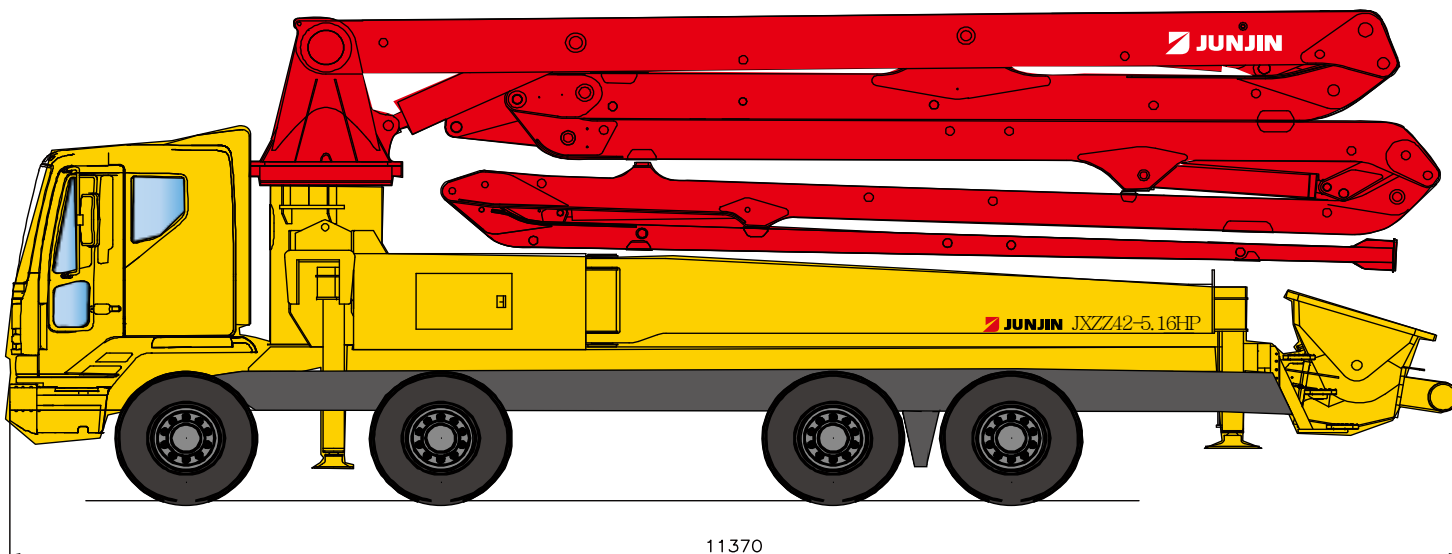
BOOM WORKING DIAGRAM



OUTRIGGER SPAN



MOUNTING DRAWING



* Remark : Standard specification with DAF. Dimension depends on truck specification.